



GEM AFRICA
GLOBAL EXCELLENCE MANAGEMENT AFRICA

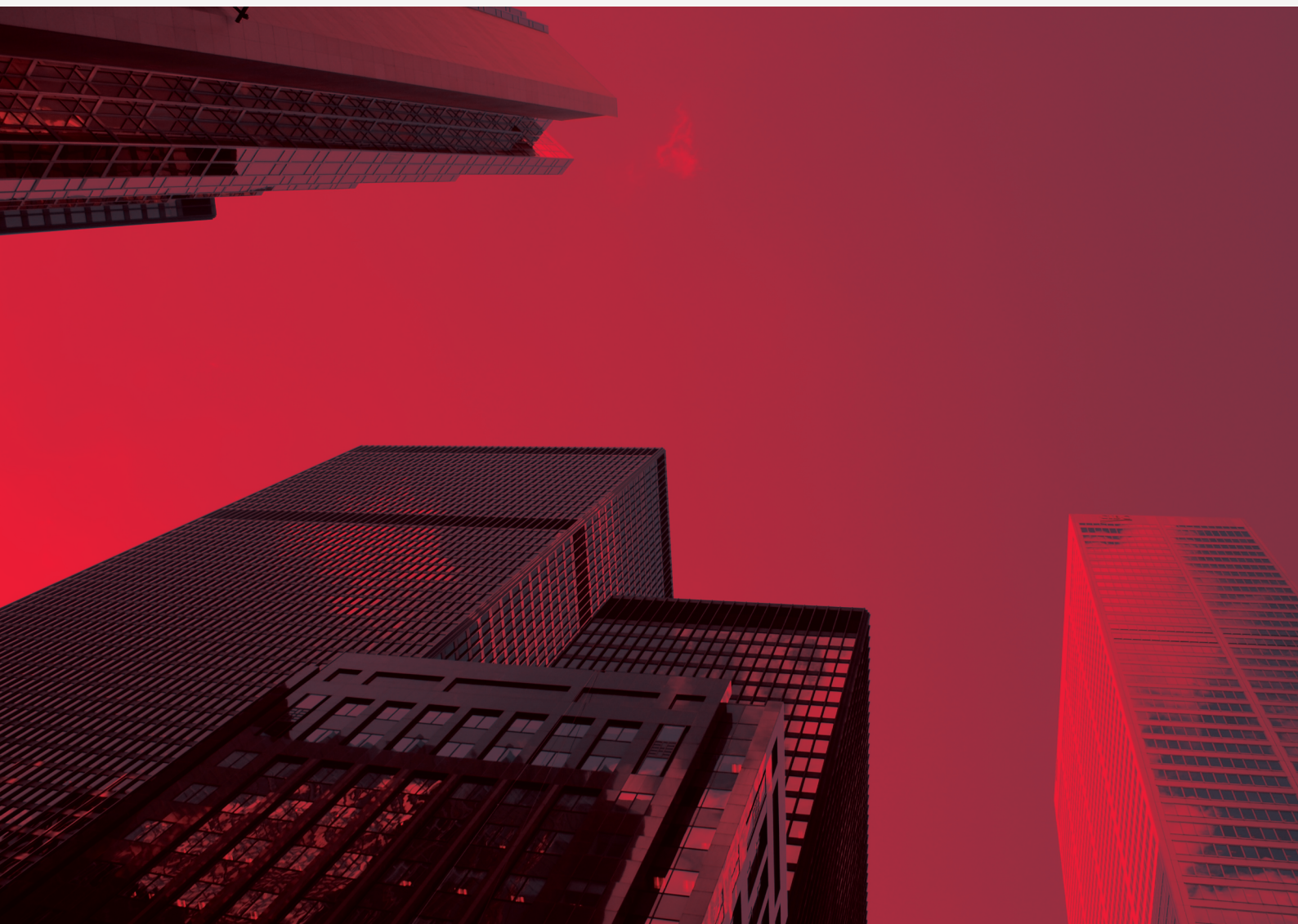
Company Profile

2023

Company Overview

Global Excellence Management Africa is a international commodity brokering and logistics company. Our focus is resource management and distribution through an integrated network of suppliers.

We combine our experience and network with new technologies and insights to serve as a trusted partner for the numerous sectors we service.



Our Business

Our business units all share the common goal of providing 3 crucial solutions to our clients:



Insights

We give dynamic insights to our clients in every sector providing them with data analytics, market expertise, risk management and financial solutions.



Transformation

We believe in the power of manufacturing to add value to commodities across sectors. Wherever possible, we transform raw materials into finished goods ready to serve markets in over 21 Africa countries.



Mobility

We ensure that we move products around Africa and around the world. Mobility is key to economic growth and we are dedicated to utilizing our expansive mesh of interconnected road, rail, river and ocean networks.

Our role in fulfilling Zimbabwe's Vision 2030

We believe in Vision 2030 and we are playing our part in ensuring that Zimbabwe achieves sustainable economic growth and development. We are completely dedicated to promoting industrialization and job creation and attracting foreign investment to ensure that the country becomes an upper middle-income country by 2030.



Building for a future generation

GEM Africa is working towards a prosperous Africa through supplying African Nations with the resources they need to thrive, in line with Vision 2030. We are bringing ingenuity, and resources to building together people, successful communities, by investing in mining, investment, infrastructure, industrialization, and agriculture.

What we Offer



Minerals

We are involved with numerous mining consortiums around Africa providing access to various mineral resources such as platinum, gold, cobalt, diamonds, Bauxite, Aluminum, copper and coal. We believe in sustainable mining and ensure that all our partners abide by strict environmentally sustainable practices.



I.T. Support

Information Technology is at the center of African development. At G.E.M Africa, we provide technologies at the edge of the future to ensure that the growth of the businesses we work with is powered by the latest technologies.



Manufacturing

Our manufacturing support spans through all aspects of the value addition chain. We provide machinery and after sales support to Africa's largest manufacturing conglomerates while also ensuring that we can provide the same level of expertise and support to emerging business across the continent.



Construction

Our mandate around construction is based on providing the critical need for growth and expansion. We use modern building methods that not only provide infrastructure that will last through the generations, but also provides practical use cases in all developments.



Tourism

Africa is home to over 10 world heritage sites including Mosa Tunya and Mana pools in Zimbabwe, Mount Kilimanjaro, the vast Serengeti in Tanzania, Stone Town in Zanzibar and many other wondrous sites across the continent. Our mandate at GEM Africa is to provide access to these and many other sites while preserving them.



Logistics

We ensure that we move products around Africa and around the world. Mobility is key to economic growth and we are dedicated to utilizing our expansive mesh of interconnected road, rail, river and ocean networks that span and surround the powerful African continent.



Agriculture

We at GEM Africa are dedicated to fulfilling the mandate of food security as defined by the Food security General Comment No.12 of the Committee on Economic, Social and Cultural Rights (CESCR) through sustainable farming practices and empowerment of small to medium scale farmers across Africa.



Communication

Africa has a rich cultural foundation of communication through story telling and ancient writing methods. This is the backbone of we use to provide both technological frameworks for information transmission as well as communication services that serve to both inform and educate our markets.

Sustainability Policy



We want to leave the world better than we found it.

That means re-imagining global agriculture, manufacturing, and energy provision through an operational ability to make material impact on improving livelihoods, increasing community well-being, and regenerating our living world.

We recognize that we succeed or fail together which is why we have set ourselves an ambitious Purpose and why sustainability is a key enabler of our Strategic Plan; it's a way of doing business, and it's what consumers increasingly expect.

Our goals and milestones are signposts along a continuous journey that is intended to strengthen our company as it strengthens the people we touch, and the communities and environment in which we operate.

We're guided by our Sustainability Framework to focus our efforts, and from which we can share what we've accomplished, what we've learned, and what's left yet to do.

Gender Inclusion & Diversity Policy

How we look does not impact our contribution to the world

At GEM Africa, we have a strong policy of Gender inclusion and race diversity. It is our belief that:

We do not believe in exclusion of suppliers and employees based on race, gender, sexual preference or physical disability. We do not tolerate the perpetuation of stereo-types. We foster an organisational culture that embraces and exemplifies our commitment to equality.



Trade References

URL	Empower Bank	Onel Electricals
Afrochine	Eretida Farms	Orgfert
Agribank	Flik Nik	Palladium Mining
Associated foods	Gold Star white sugar	Pepfar
Auto World	IDBZ	POTRAZ
Baldmin Holdings	Karinga	Prochem
Bigway Leaf Tobacco	Kusona Trading	Pure Comfort
Bigwayleaf Tobacco	Limitless Energy	Regency
CanGrow	Malawi Embassy	Saboa URL
Chris Contracting	Mega Market	Simply Beautiful
Continental Wire	Mega Snax	Sunny Yi Feng
Dreams hiring	Montero trading	Syngenta
Eat'n'lick	Mountain Chemicals	Willdale Bricks
EMA	National Aids Council	Zim Women Resource

Company Documents

ORIGINAL COPY

No. 6573/2021 Receipt No. 90418557 \$200 N^o - 020908


ZIMBABWE

Certificate of Incorporation

GLOBAL EXCELLENCE MANAGEMENT AFRICA (PRIVATE) LIMITED

I hereby certify that.....

.....

is this day incorporated under the Companies and Other Business Entities Act [Chapter 24:31] and that the Company is Limited.

HARARE

Given under my Hand and Seal at.....

this 3RD day of MAY, 2021


Registrar of Companies

ZIMBABWE

Form Cr. 6

Section 217 and 241 of Act
Section 10, 11, 13-18, 20 of Regulations

No. of Entity: 6573/2021

COMPANIES AND OTHER BUSINESS ENTITIES ACT [CHAPTER 24:31]

Particulars (a) of Register of Directors and Secretaries
And of any Changes therein

Or

A list (a) of Directors and Principal Officer of a Foreign
Entity

Name of Entity: GLOBAL EXCELLENCE MULTIMEDIA AFRICA (PRIVATE) LIMITED

To the Registrar of Companies,

HARARE

Presented by: TMC CHARTERED ACCOUNTANTS
109 NELSON MANDELA AVENUE
HARARE

Company Documents

ZIMBABWE Section 31 and 241 of Act
Section 10, 11, 13, 14, 15, 16, 17, 18, 20
Of the regulations.

FORM No. 5

COMPANIES AND OTHER BUSINESS ENTITIES ACT (CHAPTER 24:31)

No. of Entity 6573/2021

Notice of Situation and Postal Address of a Company's Registered Office or of a Foreign Company's Principal Place of Business, and any change thereto

Name of Company: GLOBAL EXCELLENCE MULTIMEDIA AFRICA (PRIVATE) LIMITED
TO THE REGISTRAR OF COMPANIES,

HARARE



The above mentioned entity hereby gives you notice that the registered office/ principal place of business of the entity-

- (a)(i) * is situated at 3 ABERDEEN ROAD, BELGRAVIA, HARARE
- (ii) the postal address * is 3 ABERDEEN ROAD, BELGRAVIA, HARARE
- (iii) the email address is
- (b) has been changed from the above address to.....
- (i) situated at.....
- (ii) postal address
- (iii) the email address is.....

With effect from..... DATE OF INCORPORATION

(Signed) *[Signature]*

SECRETARY/PRINCIPAL OFFICER

Delete whichever is inappropriate

*To be completed only in the event of a change of address

NOTES:-

- (a) In the case of change of address this form must be submitted to registrar BEFORE the proposed change takes place if the registered address of a company has been altered by a public authority, so that the changed address designates the same premises as before, no fee will be charged if the registrar is satisfied as to the facts and the name of the authority which ordered the change as stated on the form.



Zimbabwe Revenue Authority

Tax Clearance Certificate (ITF263)

Validity Period : 03-05-2023 to 08-08-2023

Global Excellence Management A /a Gem Africa
Business Partner Number : 0200285784

Your Tax position is Satisfactory. No tax should be withheld

Clearance issued on 03-05-2023 at 07:19:49 AM
Authentication Code : 5a2077ul3bJS1oB0

The authentication and validity of this certificate must be validated at:
<https://efiling.zimra.co.zw:333>





GEM AFRICA
GLOBAL EXCELLENCE MANAGEMENT AFRICA

3 Aberdeen Road,
Belgravia,
Harare,
Zimbabwe

+263 777 142 777

+263 718 777 888

+263 733 777 742

www.gemafrika.info

info@gemafrika.info